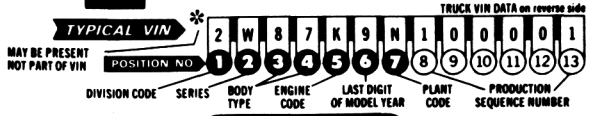


General Motors 1979 VIN System

Passenger Car

GM 1979 PASSENGER VIN SYSTEM



1 DIVISION CODE

1 - Chevrolet	3 - Oldsmobile	5 - GM Overseas	7 - GM of Canada	8 - GM Overseas	9 - GM Overseas
2 - Pontiac	6 - Buick	6 - Cadillac	T - GM (Cabrillo)		

2 CARLINE SERIES

CHEVROLET	PONTIAC	OLDSMOBILE	BUICK	CADILLAC
B - Chevette	D - LeMans	W - Omega	B - Skylark	B - Fleetwood
J - Chevette Scooter	E - Sunbird	D - Starline SR	C - Skylark Custom	B - Brougham
K - Bel Air	F - Grand LeMans	E - Omega Brougham	E - Century Special	D - DeVille
(Canada only)	G - Grand Am	G - Cutlass Salon	F - LeSabre Custom	F - Fleetwood Limo
L - Impala	H - Grand Prix SI	H - Cutlass Cruiser	G - Sport Coupe	L - Eldorado
M - Monza Monza 2+2	I - Grand Prix LI	H - Cutlass Cruiser	H - Century Sport Coupe	S - Seville
Monza S	K - Grand Prix LI	H - Cutlass Cruiser	I - Century Custom	Z - Commercial Chassis
N - Caprice Classic	L - Catalina	J - Cutlass Salon	J - Regal	
Q - Camaro	M - Sunbird Sport	K - Brougham	K - Regal Sport Coupe	
R - Monza 2+2 Sport	N - Bonneville	L - Cutlass	L - Century Limited	
S - Camaro Beretta	Q - Bonneville	M - Cutlass	M - Regal Limited	
T - Malibu	R - Brougham	N - Delta 88	N - LeSabre	
W - Malibu Classic	S - Firebird	N - Cutlass Supreme	P - LeSabre Limited	
W - El Camino	T - Firebird Spirit	B - Brougham	R - Estate Wagon	
X - Nova	U - Firebird Formula	N - Delta 88 Royale	S - Skyhawk	
Y - Nova Custom	W - Firebird Trans Am	Q - Custom Cruiser	T - Skyhawk S	
Z - Corvette	Y - Phoenix	R - Cutlass Supreme	T - Opel	
Z - Monte Carlo	Z - Phoenix LI	T - Starfire	W - Electra Park Avenue	
		V - 98 Luxury	W - Electra 275	
		X - 98 Regency	X - Skyhawk S	
		Z - Toronado Brougham	W - Opel Sport Coupe	
			X - Electra Limited	
			Y - Opel Deluxe	
			Z - Riviera S Type	
			Z - Riviera	

3 4 BODY STYLE

07 - Coupe 2 Door Special Hatchback	17 - Coupe 2 Door Hatchback	35 - Sta Wagon 4 Door	68 - Sedan 4 Door Hatchback
08 - Sedan 2 Door Hatchback	19 - Sedan 4 Door Hatchback	37 - Coupe 2 Door Hardtop	69 - Sedan 4 Door Pillar
09 - Sedan 4 Door Flareback	23 - Sedan 4 Door Aux Seat	47 - Coupe 2 Door Hardtop	77 - Coupe 2 Door
	27 - Coupe 2 Door Notchback	51 - C.R.D. Chassis	87 - Coupe 2 Door Hardtop
		57 - Coupe 2 Door Hardtop	98 - Short Gill Cover
15 - Sta Wagon 2 Door 2 Seat	33 - Sed 4 Dr. Aux. Seat Clr. Pt.		

5 PASSENGER ENGINE CODES

CODE	A	B	C	D	E	F	G	H	I	J	K	L	M	N
DISP. (liters)	1.8L	2.0L	2.3L	2.5L	2.8L	3.0L	3.3L	3.7L	4.1L	4.4L	4.9L	5.7L	7.0L	7.4L
CARB	2BL	2BL	1F1	2BL	1BH	2BL	2BH	2BH	4BL	2BL	4BL	4BL	2BL	DIESEL
DIVISION USAGE	1,2,3,4	4	6	14	1,2,4	1,7	3	1,2,14	1,2,4	1,2,4	2,3,4	1,2,3,4	1,1,2,4	3,6
PRODUCING DIV	4	**	**	4	1	1	1,2	1,7	1,7	3	1,7	1	1	3

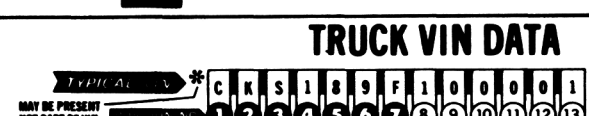
7 PLANT CODE

A - Lakewood	GA - Framingham	MA - Norwood	OH - Willow Run	MI - 2 - Ste Therese	PQ -
B - Baltimore	MD - First Buckle	MI - Pontiac	MI - Fairfax	RS - 3 - Detroit	MI -
C - Southgate	CA - Irvine	MI - Warren	IL - Wilmington	DE - 4 - Scarborough	OH -
D - Doraville	GA - Leeds	MO - St. Louis	MO - Fremont	CA - 5 - London	OH -
E - Linden	NI - Van Nuys	CA - Torrance	CA - Fremont (GM)	MI - 7 - Lordstown	OH -
F - Flint, Chev	MI - Lansing	MI - Pontiac-GMC	MI - Okazaki	MI - 8 - Fujiwara	Japan
				MI - 9 - Detroit (CAD)	MI -

The information shown is correct at time of printing, but may be changed during model year.

Light Truck

GM 1979 TRUCK VIN SYSTEM



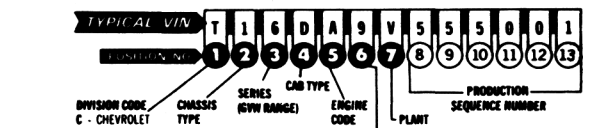
1 DIVISION CODE

C - CHEVROLET												
T - GMC												

2 SERIES	C - CONVENTIONAL CAB* 106"	P - FORWARD CONTROL
	G - CHEVY VAN, SPORT VAN, VANDURA AND RALLY WAGON	L - LUV
	E - CONVERTIBLE CAB 4 1/4" 106"	R - LUV 4 1/4
	* INCLUDING BLAZER, JIMMY AND SUBURBAN	

3 ENGINE CODES	4 MODEL	5 BODY TYPE
CODE	D L M N R S T U Z	1 - 1/2 TON
DISP. (liters)	4.1L 5.7L 5.7L 1.8L 6.6L 7.4L 4.8L 5.0L 5.7L	2 - CHASSIS CONV.
CARB	2BL 4BL 2BL 2BL 4BL 4BL 1BL 2BL DIESEL	3 - CHASSIS CAB
DIV. USAGE	C T C T C C C T C T C T C T	4 - CAB & PICK-UP BOX OR VAN WITH H-CURE BOX
PRODUCING DIV	C C+ C ++ C C C C C+ ++	5 - VAN & PANEL
		6 - SPORT VAN, RALLY WAGON, SUBURBAN
		7 - MAJOR HOME CHASSIS
		8 - UTILITY (BLAZER, JIMMY)

1979 MEDIUM & HEAVY DUTY VIN DATA



2 ENGINE TYPE	3 SERIES (GVW RANGE)	4 CAB TYPE	5 ENGINE CODE
0 - 2x0 (Gilder)		C - 92.5" BDC CONVENTIONAL	A - GM 350 Y8 GASOLINE
1 - 4x2	4 - 16001-20000	D - 97.5" BDC CONVENTIONAL	B - GM 366 Y8 GASOLINE
	5 - 13800-18500	E - 108" BDC CONVENTIONAL	C - CUMMINS NTC-290, FORMULA 290, NTC-350, FORMULA 350, NTC-400 DIESEL
	6 - 16000-25000	F - 116" BDC CONVENTIONAL (SFA)	D - GM 4-531 DIESEL
	7 - 19200-32800	G - 116" BDC CONVENTIONAL (SBA)	E - GM 427 Y8 GASOLINE
	8 - 23100-32700	H - 54" BDC ALUMINUM TILT	N - GM 6V-71 DIESEL
	9 - 25900-44800	I - 86" BDC ALUMINUM TILT	J - GM 6-71 IN-LINE DIESEL
3 - 6x2	6 - 33700-41000	K - 71.75" BDC STEEL TILT	K - GM 6V-92 DIESEL
	7 - 35400-50000	L - 71.75" BDC STEEL TILT	N - CUMMINS KT-450 DIESEL
	8 - 40300-50000	P - BUS CHASSIS FLAT BACK CAB*	R - CATERPILLAR 3406-DIT DIESEL
	9 - 42800-66000	T - CHASSIS ONLY	S - GM 454 Y8 GASOLINE
			T - GM 292 IN-LINE 6 GASOLINE
			X - GM 6V-53 DIESEL
			V - GLIDER KIT LESS ENGINE
			Y - CATERPILLAR 3208 DIESEL

General Motors Corporation, Consumer Relations & Service Staff
GM Bldg. 13-113, Detroit, MI 48202
Litho in U.S.A. - 9/78